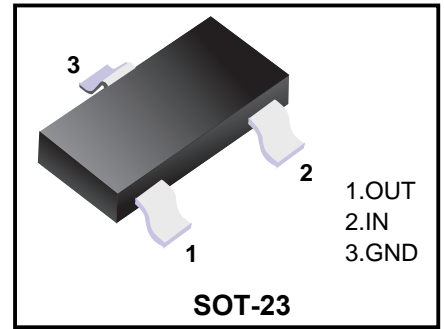


Three-terminal positive voltage regulator

FEATURES

- ◆Maximum Output current I_O : 0.1 A
- ◆Output voltage V_O : 5 V
- ◆Continuous total dissipation P_D : 0.35 W ($T_a = 25^\circ\text{C}$)



Marking Code	
78L05	L05

ABSOLUTE MAXIMUM RATINGS (Operating temperature range applies)

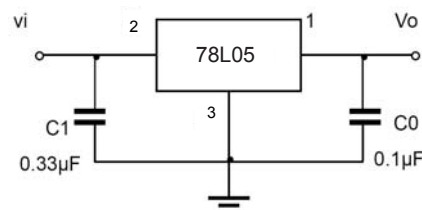
Characteristics	Symbols	Value	Units
Input Voltage	V_I	30	V
Operating Junction Temperature Range	T_{OPR}	0-125	$^\circ\text{C}$
Storage Temperature Range	T_{STG}	-65 to +150	$^\circ\text{C}$

ELECTRICAL CHARACTERISTICS AT SPECIFIED VIRTUAL JUNCTION TEMPERATURE

($V_i=10\text{V}, I_o=40\text{mA}, C_i=0.33\mu\text{F}, C_o=0.1\mu\text{F}$, unless otherwise specified)

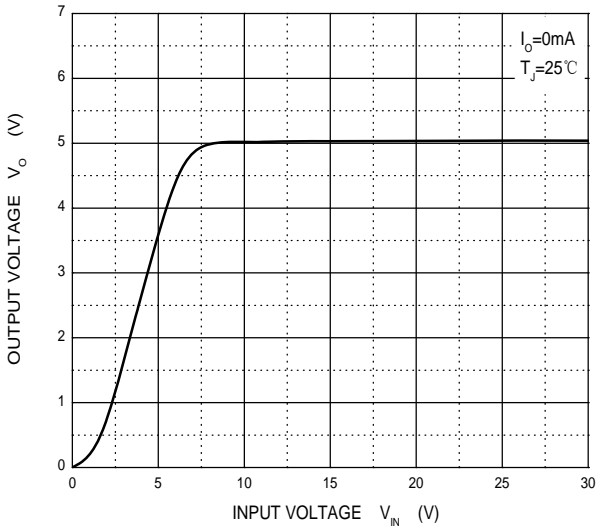
Characteristics	Symbol	Test conditions	Min	Typ	Max	Unit	
Output voltage	V_o	25°C	4.8	5.0	5.2	V	
		0-125 $^\circ\text{C}$	$7\text{V} < V_i < 20\text{V}, I_o=1\text{mA}\sim 40\text{mA}$	4.75	5.0	5.25	V
			$I_o=1\text{mA}\sim 70\text{mA}$	4.75	5.0	5.25	V
Load Regulation	ΔV_o	$I_o=1\text{mA}\sim 100\text{mA}$	25°C	15	60	mV	
		$I_o=1\text{mA}\sim 40\text{mA}$	25°C	8	30	mV	
Line regulation	ΔV_o	$7\text{V} < V_i \leq 20\text{V}$		32	150	mV	
		$8\text{V} < V_i \leq 20\text{V}$	25°C	26	100	mV	
Quiescent Current	I_q		25°C	3.8	6	mA	
Quiescent Current Change	ΔI_q	$8\text{V} \leq V_i \leq 20\text{V}$	0-125 $^\circ\text{C}$		1.5	mA	
	ΔI_q	$1\text{mA} \leq V_i \leq 0\text{mA}$	0-125 $^\circ\text{C}$		0.1	mA	
Output Noise Voltage	V_N	$10\text{Hz} < f \leq 100\text{KHz}$	25°C	42		μV	
Ripple Rejection	RR	$8\text{V} < V_i \leq 20\text{V}, f=120\text{Hz}$	0-125 $^\circ\text{C}$	41	49	dB	
Dropout Voltage	V_d		25°C	1.7		V	

TYPICAL APPLICATION

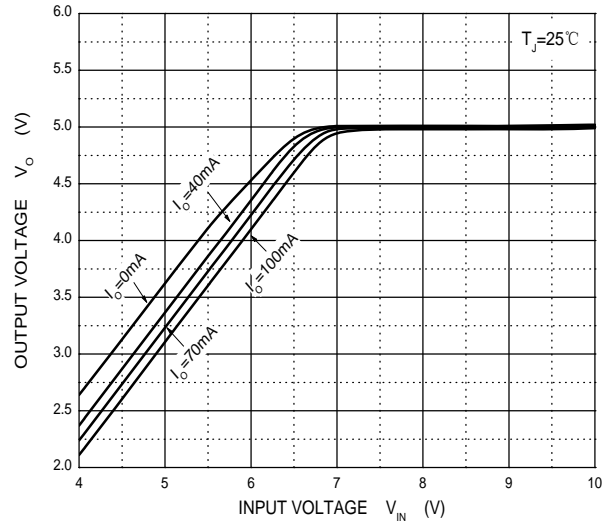


Typical Characteristics

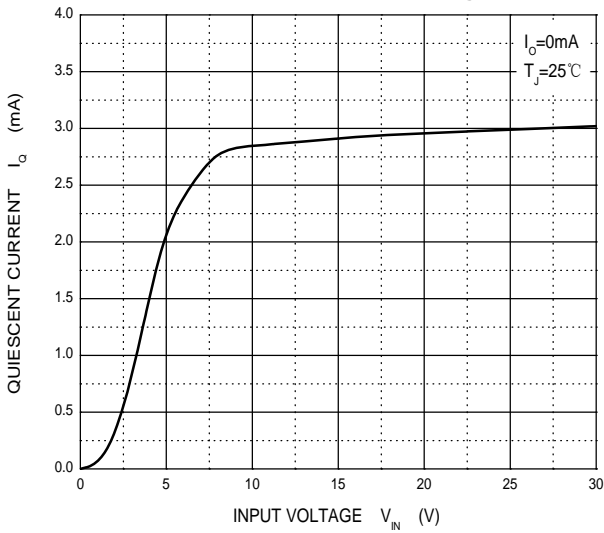
Output Characteristics



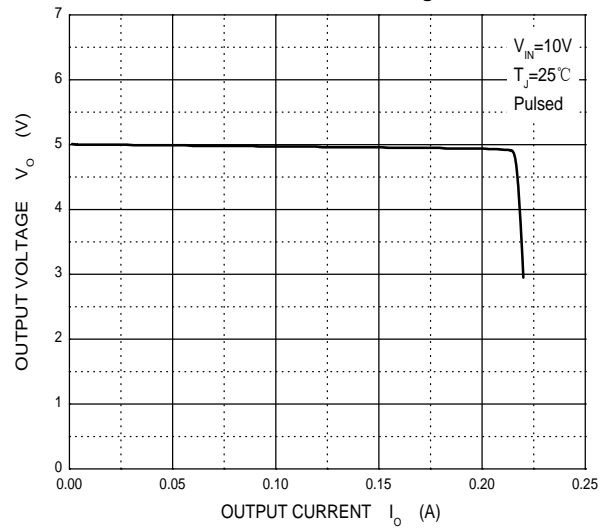
Dropout Characteristics



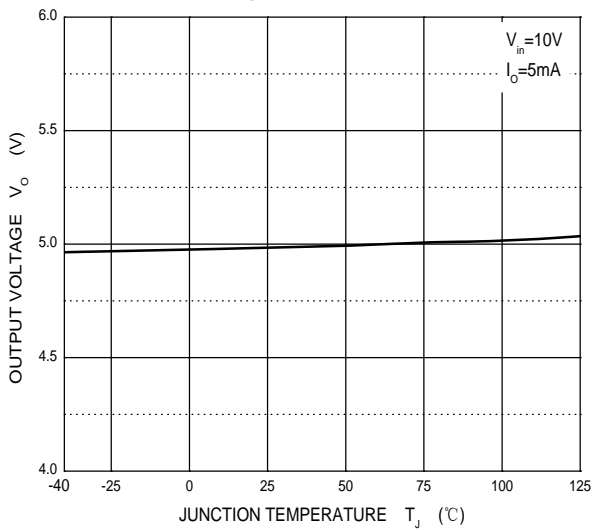
Quiescent Current vs Input Voltage



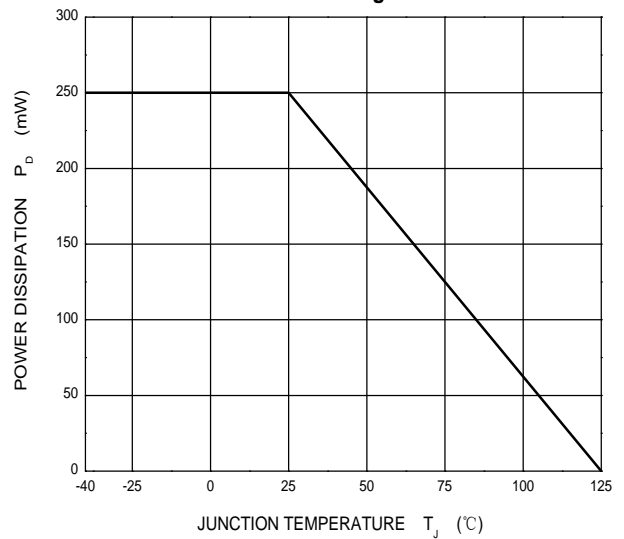
Current Cut-off Grid Voltage



Output Voltage vs Junction Temperature



Power Derating Curve



Ordering information

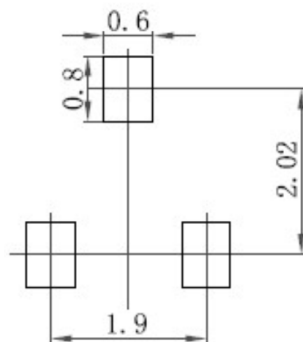
Package	Packing Description	Base Quantity	Packing Quantity
SOT-23	Tape/Reel, 7" reel	3000pcs/Reel	24000PCS/Box 120000PCS/Carton

Package Dimensions

SOT-23

Dim.	Millimeter (mm)		mil	
	Min.	Max.	Min.	Max.
A	0.9	1.15	35	45
A1	0.1		3.9	
bp	0.38	0.48	15	19
C	0.09	0.15	3.54	5.9
D	2.8	3.1	110	122
E	1.2	1.4	47	55
E	1.9		75	
E1	0.95		37	
HE	2.1	2.6	83	102
Lp	0.15	0.45	5.9	18
Q	0.45	0.55	18	22
v	0.2		7.9	
W	0.1		4	

The recommended mounting pad size



Disclaimer

The information presented in this document is for reference only. Guangdong Youfeng Microelectronics Co.,Ltd. reserves the right to make changes without notice for the specification of the products displayed herein to improve reliability, function or design or otherwise. The product listed herein is designed to be used with ordinary electronic equipment or devices, and not designed to be used with equipment or devices which require high level of reliability and the malfunction of which would directly endanger human life (such as medical instruments, transportation equipment, aerospace machinery, nuclear-reactor controllers, fuel controllers and other safety devices), YFW or anyone on its behalf, assumes no responsibility or liability for any damages resulting from such improper use of sale. This publication supersedes & replaces all information previously supplied. For additional information, please visit our website <https://www.yfwdiode.com>, or consult YFW sales office for further assistance.